

by CHRIS BAKER
Moyston PS

SKELETONS

KNOWLEDGE

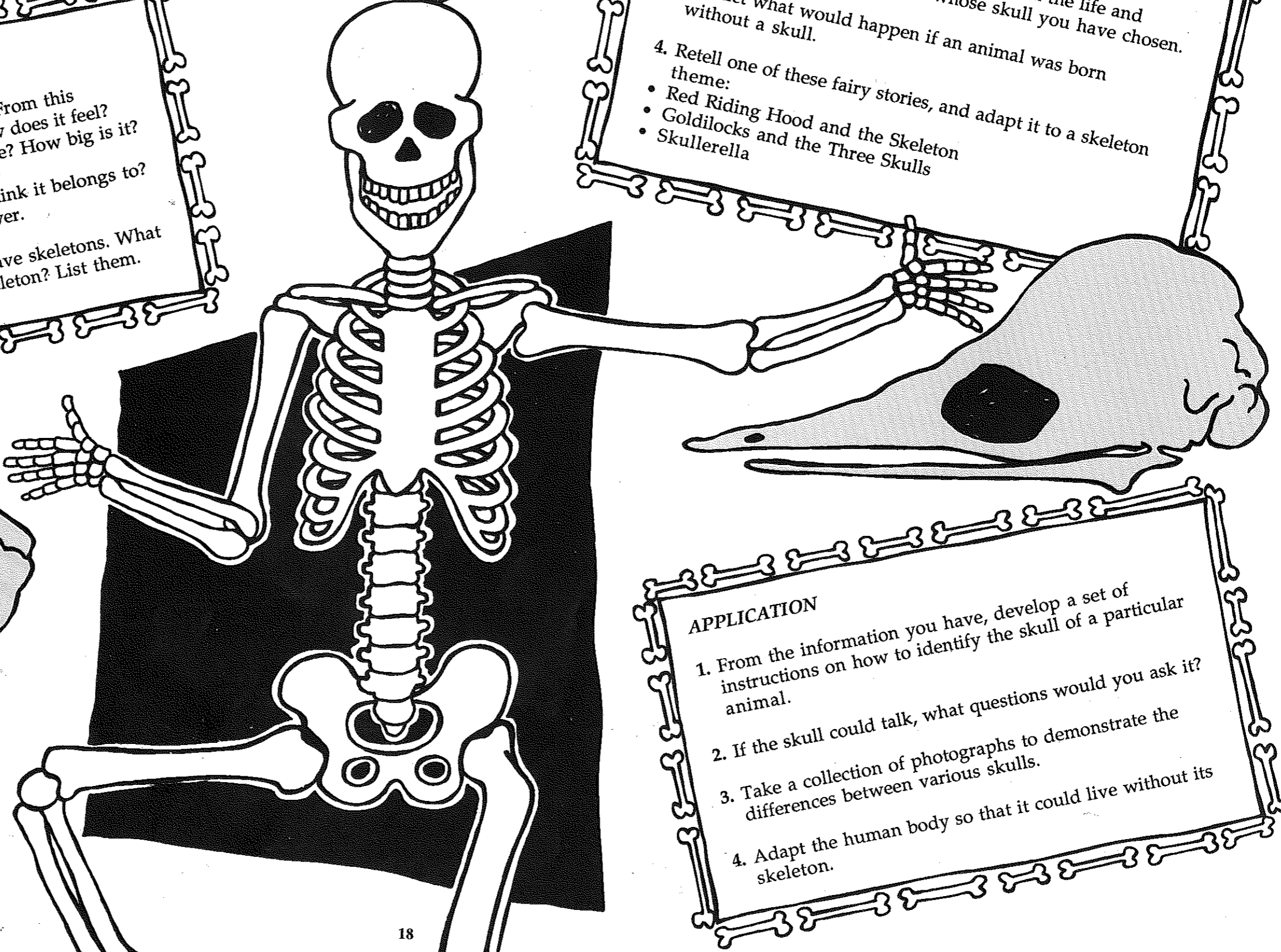
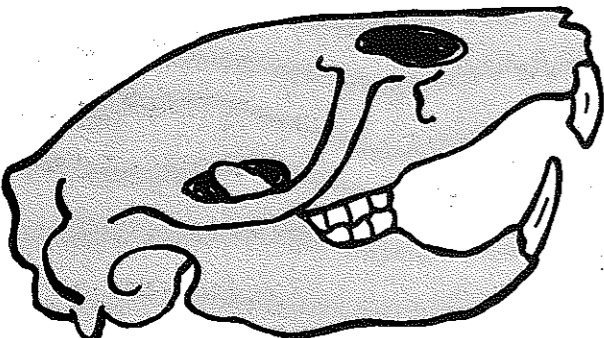
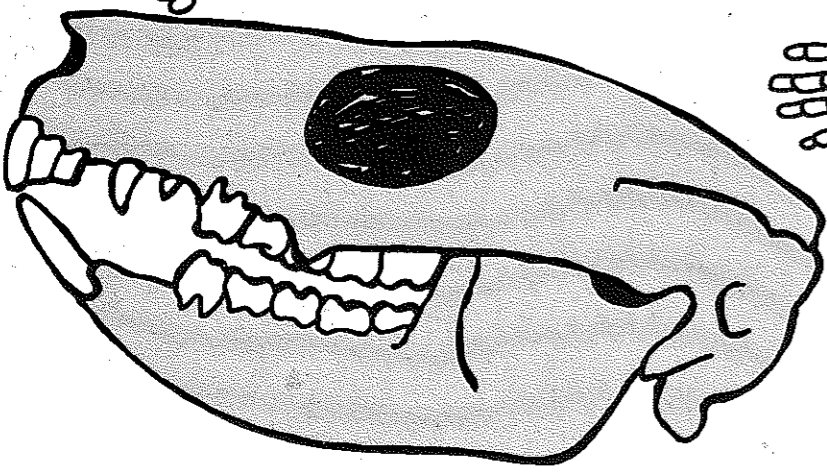
1. Collect different types of animal skulls. From this collection, select a skull. Describe it: How does it feel? What does it look like? What is its shape? How big is it?
2. Select a skull. Which animal do you think it belongs to? List your reasons in your written answer.
3. Make a list of any creatures which have skeletons. What advantages are there in having a skeleton? List them.

COMPREHENSION

1. Select two skulls from different animals. Compare them, and list the similarities and differences that exist between them.
2. Write and perform a play that deals with the life and death of one of the animals whose skull you have chosen.
3. Predict what would happen if an animal was born without a skull.
4. Retell one of these fairy stories, and adapt it to a skeleton theme:
 - Red Riding Hood and the Skeleton
 - Goldilocks and the Three Skulls
 - Skullerella

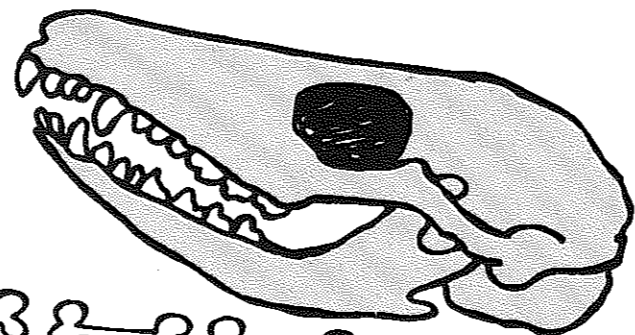
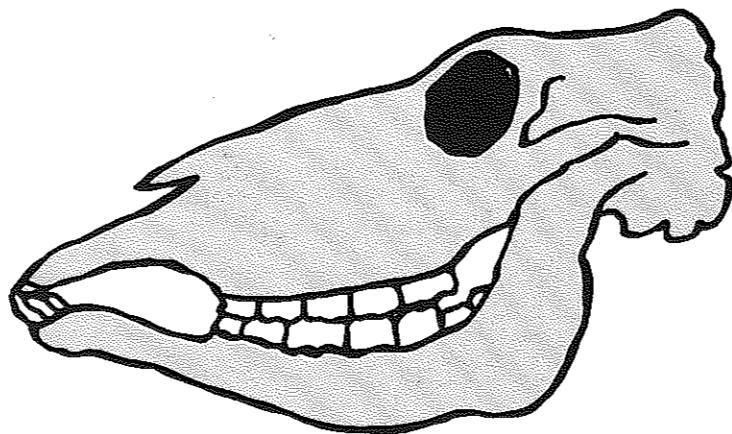
APPLICATION

1. From the information you have, develop a set of instructions on how to identify the skull of a particular animal.
2. If the skull could talk, what questions would you ask it?
3. Take a collection of photographs to demonstrate the differences between various skulls.
4. Adapt the human body so that it could live without its skeleton.



ANALYSIS

1. From your skull collection, construct a graph which shows the numbers and types of skulls.
2. Find pictures of a skull of modern man and one of Neanderthal Man. Study them. Compare the two skulls and prepare a report setting out the differences between the two.
3. You have been selected to interview the finders of a 40 000-year-old unidentified animal's skeleton. Plan six interesting questions you could ask them.



EVALUATION

1. Debate this statement: "Skulls are an extremely effective means of protecting the brain."
2. Do you think wearing helmets when bike-riding is a good or bad thing? Prepare a report stating your view. Give your reasons.

SYNTHESIS

1. Just suppose people had skeletons like kangaroos. Predict all the things that might happen.
2. Compose a song about skulls, and set it to the tune of a well-known nursery rhyme.
3. "STRANGE SKELETON DISCOVERED BY NATURALISTS IN STATE FOREST."
Make up a story to go with this headline, giving all the necessary information.
4. You are in charge of an expedition to rescue an important person from a skull-like cave. How will you overcome the following problems?
 - The cave is guarded by a tribe of skull-worshipping natives.
 - The cave is surrounded by a river of red-hot lava.
 - The important person is in a trance-like state and, when spoken to, yells like a banshee.

You may only take five of the following things with you: a watch, a bicycle, a camera, rope, a coin, a felt-tipped pen, a ladder, modelling clay.

